



# Venue™ Family Ultrasound Systems\*

Made for **Perioperative Anesthesia**



*Simple. Fast. Precise.*

\*Venue Family, as referenced herein, includes Venue™, Venue Go™, and Venue Fit™ systems

# Perform patient assessments while maintaining patient comfort

The Venue Family of Point of Care ultrasound systems deliver simple, fast, and precise ultrasound to help you make clinical decisions with confidence and decrease the risk of complications. With AI advanced tools that help increase efficiency and drive consistency from user to user, Venue Family systems allow you to:

- Visualize the nerves and surrounding anatomy quickly and clearly with AI technology
- Enable your fast assessment of endotracheal tube placement, cardiac function, pulmonary function, and aspiration risk
- See needles and guide them exactly where they need to be using advanced needle recognition tools
- Create visual documentation automatically

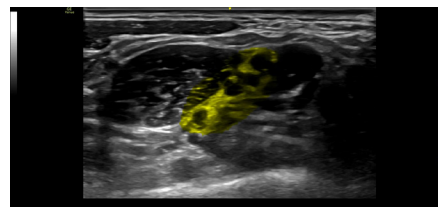
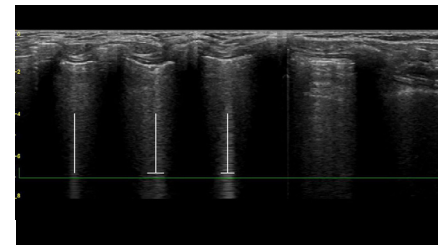
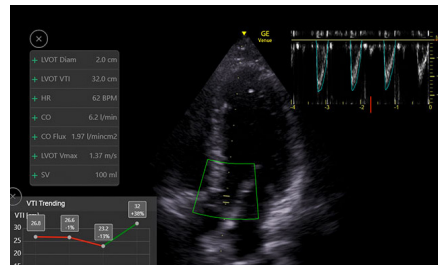
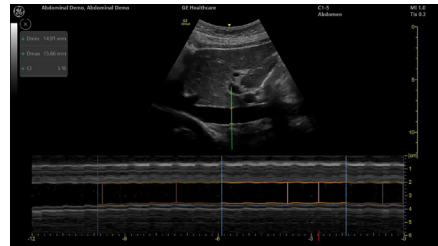
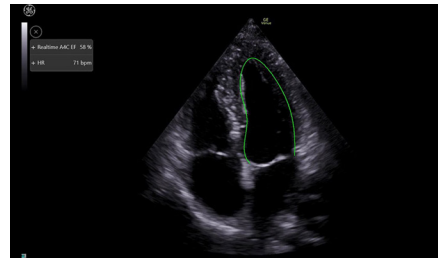
Whether you're looking for an adaptable model that goes from cart to table to wall, or a console system with a large screen, there is a versatile, robust, easy-to-use Venue Family system made for you.





# Work smarter not harder with AI-enabled tools

Venue Family ultrasound systems are designed to simplify the complex—helping clinicians increase exam efficiency for perioperative patients. Leveraging data and proprietary algorithms, AI-based clinical tools help users of all experience levels confidently make clinical decisions.



## Real-time EF

Enables continuous calculation of real-time ejection fraction without having to conduct an ECG.

**Capture instant, precise results — within +/- 10 points of experts in 86% of cases.<sup>1</sup>**

## Shock toolkit

Facilitates shock evaluation by focusing on key organs linked to patient status: the heart, lungs, and inferior vena cava.

Associated rapid assessments:

### Auto IVC

Measure IVC collapsibility or distensibility accurately and automatically.

**Equivalent to an expert user's ability 87% of the time.<sup>2</sup>**

### Auto VTI

The VTI trending function helps clinicians quickly visualize the trend so the next course of action can be determined.

**Experience up to 82% time savings.<sup>3</sup>**

### Auto B-Lines

Calculate overall lung score in one step. You can also use it with Lung Sweep to highlight B-lines and display the frame with the most B-lines per rib space.

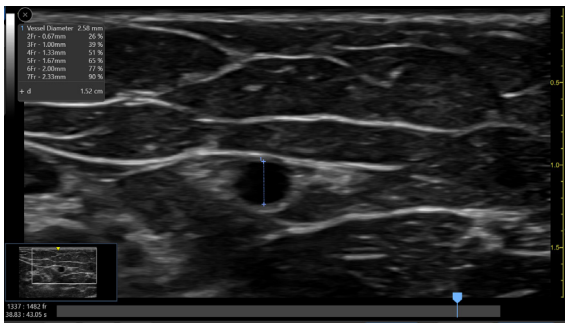
**As highly reliable as visual counting.<sup>4</sup>**

### cNerve

During the scouting phase, use cNerve to identify the nerve landmark and see it highlighted on the image. Helps detect and track the nerve in 99% of cases while scanning or reviewing a stored clip<sup>5</sup>

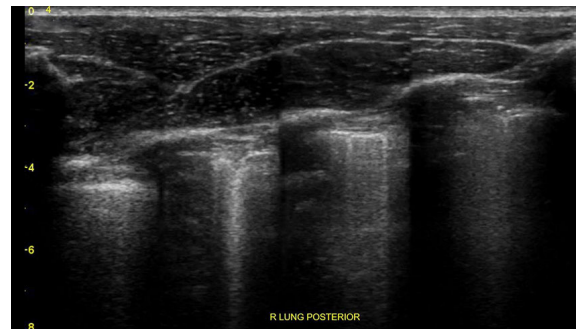
# Support confident decision-making with advanced capabilities

Venue Family systems feature a broad array of tools you can use to help improve patient comfort, increase productivity and throughput, and decrease the risk of complications. Built-in learning helps inexperienced users get up to speed fast, helping elevate department expertise and consistency. Needle-precision guidance helps users easily differentiate between the needle and anatomy to help guide the needle exactly where it needs to be.



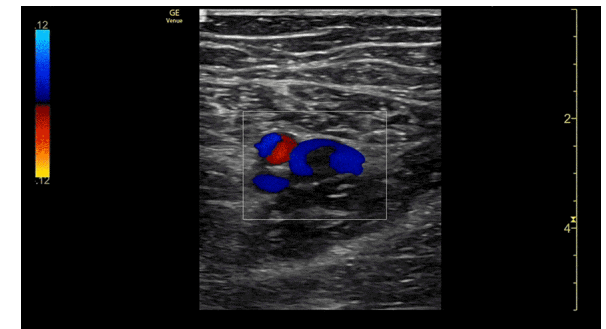
## Select the right catheter with catheter to vessel ratio

Supports you in selecting the appropriate sized catheter based on vessel diameter.



## See the entire lung with Lung Sweep

Provides a dynamic, panoramic view of the entire lung.



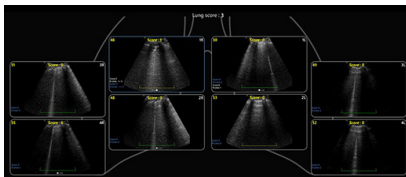
## Visualize blood flow with Color Flow

Provides a real-time, two-dimensional, cross-sectional view of blood flow.

# Keep moving with optimized workflow

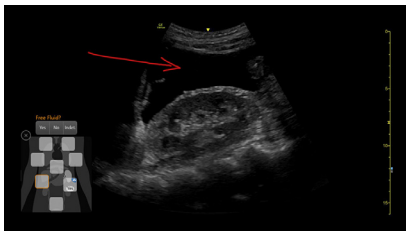
The Venue Family systems handle the busywork with protocol management and easy documentation features to provide a visual overview—reducing keystrokes by up to 80%<sup>3</sup> and empowering you to make fast assessments.

## Easy and fast exam documentation



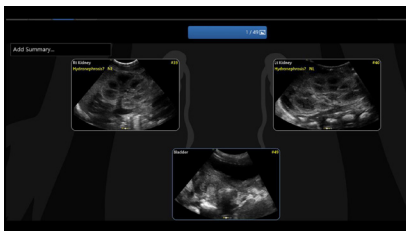
### Lung diagram

Single-view diagram of anatomical lung segments with one-click image storing that automatically calculates the Lung Ultrasound Score (LUSS).



### eFAST diagram

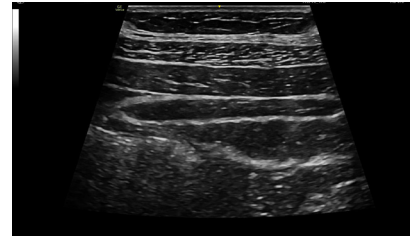
Assess and document patient status, from internal bleeding to pneumothorax.



### Renal diagram

Provides easy follow-up for patients with suspected hydronephrosis.

## See more, faster



### Virtual Convex

Provides a wider field of view so you can visualize larger anatomy structures in a single scan and aims to enhance image quality on linear probes.



### Simple Screen

Remove the clutter and see only what you need to see. This feature allows you to see up to a 39%<sup>4</sup> larger ultrasound image and view only the icons you want.

## Assist training with Scribble

Fast-track training by leveraging a touch-operated pointer and free-drawing capabilities, visible on an external monitor or shared screen.



# Increase efficiency and optimize the patient experience with powerful transducers

Experience clear images on a range of patients, from adult to pediatric, with the latest probes and transducers for the Venue Family. With our button probes, you can perform procedures while controlling multiple parameters from the probe without breaking the sterile field. Needle procedures that once required two people can now be done with one.

## Linear

### L4-20t-RS

Supports high-frequency imaging of superficial structures while also being able to penetrate deeper anatomy without compromising imaging quality. With four configurable buttons.



### L4-12t-RS

Two-button programmable transducer for peripheral vascular, nerve blocks, and needle guidance. With four configurable buttons.



### L10-22-RS

A high-frequency linear array.



### 9L-RS

A linear array specifically designed for vascular access.



### 12L-RS

An excellent linear transducer for peripheral vascular, small parts, nerves, and pediatric medicine.



### L8-18i-RS

Specially designed and utilized for applications like peripheral vascular, small parts, nerve blocks, and needle guidance.



## Curved(convex)

### C1-5-RS

Supporting imaging of mid to deep structures.



## Phased

### M5Sc-RS

Probe for abdominal, pediatrics, and cardiac imaging applications.

\*Available on Venue only.



### 3Sc-RS

Transducer for adult cardiac, abdomen, pediatric, renal, and adult transcranial applications.



## TEEprobe

### 6Tc-RS

Specially designed and utilized for adult cardiac applications.



EXPLORE ALL ULTRASOUND TRANSDUCERS



# Made for Your Point of Care

From bedside to tight spaces, our systems can go from cart to table to wall to accommodate procedural environments.



## Easy to reach probes

Smart cable management puts probes safely up top and cables out of the way and off the floor



## Easy to clean

Smooth and seamless surface supports infection control efforts



## Reliable support

The Venue Family is backed by a multi-year warranty<sup>3</sup>



## Long operation

Batteries can provide active scan times of up to four hours



## Robust

A durable screen, bumpers and multi-purpose handles protect against bumps, bangs, and slashes

## Easy to move

Sleek footprint and big wheels for nimble maneuvering.



**3 systems.  
1 shared platform.**  
**For your Point  
of Care**

Wherever you perform procedures, there is a Venue system designed to meet your needs. Learn more about the members of the Venue Family with this side-by-side comparison.



	Venue	Venue Go	Venue Fit
<b>Portability</b>	Adjustable cart base	Unit detaches from adjustable cart and allows for use on table top or standard VESA® connection	Unit detaches from adjustable cart and allows for use with kickstand or standard VESA connection
<b>Battery life</b> (scan time)	Up to 4 hours	Up to 2 hours	Up to 1 hour
<b>Monitor size</b>	19-in. multi-touch, high-resolution color LCD	15.6-in. multi-touch, high-resolution color LCD	14-in. multi-touch, high-resolution color LCD
<b>Ratio</b>	5:4	16:9	16:9
<b>Active probe ports</b>	4	3	2
<b>Footprint of cart</b>	19.4-in. wide x 21.4-in. deep	19.9-in. wide x 18.9-in. deep	18.7-in. wide x 18.7-in. deep
<b>Weight of unit</b> (off cart)	N/A	13.9 lbs.	12 lbs.





1. Venue Go R2 Technical Product Claims Document (DOC2199650).
2. Claims based on data collected in cNerve reading study and based on study done Identifying anatomical structures on ultrasound: assistive artificial intelligence in ultrasound-guided regional anesthesia—27 November 2020 Synopsis. Supporting study documentation:
  - cNerve Study May 2022.docx
  - cNerve study Results.xlsx
3. Supporting evidence for Venue and Venue Go is documented in DOC2391130. Supporting evidence for Venue Fit is documented in DOC2454794.
4. Supporting evidence for Venue (at 39% larger) and Venue Go (at 18% larger) is documented in DOC2391130. Supporting evidence for Venue Fit (at 18% larger) is documented in DOC2454794.
5. Please consult your local GE Healthcare representative for warranty term information in your region.

© 2022 GE – All rights reserved.

GE reserves the right to make changes in specifications and features shown herein, or discontinue the product described at any time without notice or obligation. GE, the GE monogram, Venue, Venue Go, and Venue Fit are trademarks of GE. GE Healthcare, a division of GE.